

THE 1990 EXPEDITION TO CAMDEN HARBOUR, NORTH-WEST KIMBERLEY: PART 2 – ANNOTATED BIRD SPECIES LIST

by KEVIN COATE

11 Peak View, Canning Vale, W.A. 6155

LAURIE SMITH

14 Mitchell Street, Mt Lawley, W.A. 6050

LEE FONTANINI

R.M.B. 312, Manjimup, W.A. 6258

and ANGELA SANDERS

1190 Nanarup Road, Nanarup, W.A. 6330

SUMMARY

This paper is based on data recorded by the above from Adele Island, Camden Harbour, Augustus Island, Gairdner River, Mulgudna Island, Slate Islands, Langgi, Doubtful Bay, Glenelg River areas, Kingfisher Islands and Lacepede Islands during the dry season in July 1990. Several historic sightings from the 1865 journal of Treverton Sholl are included. Of these the most notable is Gouldian Finch. Nomenclature follows Johnstone (2001).

PHASIANIDAE

Brown Quail *Coturnix ypsilophora*
Gairdner River: 11/7/1990. Slate Islands (Wailgwin Island): 14/7/1990 (5). Often recorded on off-shore islands in the Kimberley, especially the Lacepede Islands.

SULIDAE

Masked Booby *Sula dactylatra*
Adele Island: 8/7/1990 (estimated several hundred breeding pair, most nesting close to the shoreline).

Red-footed Booby *Sula sula*
Adele Island: 8/7/1990 (14 nests on *Abutilon indicum* shrubs – breeding birds on barely feathered chicks up to a month old – 4 intermediate phase adults). Discovered breeding on Adele Island for the first time in Western Australia by Coate *et. al.* a month earlier on 2/6/1990.

Brown Booby *Sula leucogaster*
Adele Island: 8/7/1990 (breeding – scattered throughout the island – estimated to be several thousand breeding pair). Mulgudna Island: 18/7/1990 (a dead bird). West Lacepede Island: 19/7/1990 (estimated 4000–5000 breeding pair – no eggs, chicks well advanced).

ANHINGIDAE

Darter *Anhinga melanogaster*
Doubtful Bay (Red Cone Creek –
16°05'S 124°41'E): 15/7/1990 (1).

PHALACROCORACIDAE

Pied Cormorant *Phalacrocorax varius*

Adele Island: 8/7/1990 (a breeding colony with about 300 advanced young). Mulgudna Island: 18/7/1990 (feathers identified by Western Australian Museum). West Lacepede Island: 19/7/1990 (6 on beach).

Little Pied Cormorant
Phalacrocorax melanoleucos
Doubtful Bay (Red Cone Creek –
16°05'S 124°41'E): 15/7/1990 (1).
Gairdner River (between Camden Harbour and Glenelg River): 11/7/1990.

PELECANIDAE

Australian Pelican *Pelecanus conspicillatus*

Adele Island: 8/7/1990 (50 on a sand spit + 29 partly fledged young including large juveniles in a breeding area toward the centre of the island).

FREGATIDAE

Greater Frigatebird *Fregata minor*
Adele Island: 8/7/1990 (estimated about 50 breeding pair on *Abutilon indicum* shrubs). Discovered breeding on Adele Island for the first time in Western Australia by Coate *et. al.* a month earlier on 2/6/1990.

Lesser Frigatebird *Fregata ariel*
Adele Island: 8/7/1990 (estimated

2000–3000 breeding pair on nest platforms of sticks and pieces of spinifex positioned on flattened clumps of *Spinifex longifolius*). Camden Harbour: 12/7/1990 (1). West Lacepede Island: 19/7/1990 (estimated 1000–2000 breeding pair).

ARDEIDAE

Eastern Reef Egret *Egretta sacra*
Adele Island: 8/7/1990 (10 white phase – 10 grey phase). Langgi: 14/7/1990. Mulgudna Island: 18/7/1990 (one shallow nest of loosely woven *Sporobolus virginicus* with 2 plain blue eggs heavily incubated – a grey phase Reef Egret came off the nest, the only other Reef Egret to be seen was a white phase).

White-necked Heron *Ardea pacifica*
Gairdner River (between Camden and Glenelg River): 11/7/1990 (1).

Striated Heron *Butorides striatus*
Camden Harbour: 10/7/1990; 12/7/1990 (2 immature).

White-faced Heron *Ardea novaehollandiae*
Adele Island: 8/7/1990 (4).

Great Egret *Ardea alba*
Adele Island: 8/7/1990 (15).
Montgomery Reef: 15/7/1990.
Doubtful Bay (Red Cone Creek –
16°05'S 124°41'E): 15/7/1990 (1).
West Lacepede Island: 19/7/1990 (1).

Intermediate Egret *Ardea intermedia*
Adele Island: 8/7/1990 (4).

Rufous Night Heron *Nycticorax caledonicus*
Camden Harbour: 12/7/1990 (1).

Black Bittern *Ixobrychus flavicollis*
Doubtful Bay (Red Cone Creek – 16°05'S 124°41'E): 15/7/1990 (1).

THRESKIORNITHIDAE

Straw-necked Ibis *Threskiornis spinicollis*

Camden Harbour (Association Inlet): 9/7/1990 (15 perched on mangroves); 10/7/1990.

ACCIPITRIDAE

Osprey *Pandion haliaetus*

Camden Harbour: 12/7/1990 (1); 13/7/1990 (1). Slate Islands (Wailgwin Island): 14/7/1990 (2). Maitland Bay (Glenelg River): 17/7/1990 (nest containing one chick on a small island).

Square-tailed Kite *Hamirostra isura*
Langgi: 14/7/1990 (2).

Black-breasted Buzzard *Hamirostra melanosternon*

Near Glenelg River: 11/7/1990.
Langgi: 14/7/1990 (1).

Whistling Kite *Haliastur sphenurus*
Between Camden and the Glenelg River: 11/7/1990 (1).
Camden Harbour: 12/7/1990 (1).

Brahminy Kite *Haliastur indus*
Camden Harbour (Association Camp): 9/7/1990 (1); 10/7/1990 (2).
Mt Lookover (shoreline and slopes): 13/7/1990. Langgi: 14/7/1990 (1). George Water: 17/7/1990 (1).

Brown Goshawk *Accipiter fasciatus*
Camden Harbour (Association

Camp): 10/7/1990 (1). Gairdner River (between Camden and the Glenelg River): 11/7/1990. Langgi: 14/7/1990 (1).

Collared Sparrowhawk *Accipiter cirrocephalus*

Camden Harbour (Government Camp): 10/7/1990 (1). Langgi: 14/7/1990 (1).

Little Eagle *Aquila morphnoides*

Camden Harbour (Association Camp): 9/7/1990 (1). Gairdner River (between Camden and the Glenelg River): 11/7/1990 (1).

White-bellied Sea-Eagle *Haliaeetus leucogaster*

Camden Harbour: 9/7/1990 (1); 12/7/1990 (2). Langgi: 14/7/1990 (2).

Spotted Harrier *Circus assimilis*
Gairdner River (between Camden and Glenelg River): 11/7/1990 (1).

Swamp Harrier *Circus approximans*
West Lacepede Island: 19/7/1990 (1).

FALCONIDAE

Brown Falcon *Falco berigora*
Gairdner River: 10/7/1990.
Between Gairdner River and Glenelg River: 11/7/1990 (1).

Australian Kestrel *Falco cenchroides*
Adele Island: 8/7/1990 (1). West Lacepede Island: 19/7/1990 (1).
Gairdner River: 11/7/1990.
Between Gairdner River and Glenelg River: 11/7/1990.

OTIDIDAE

Australian Bustard *Ardeotis australis*
Gairdner River: 11/7/1990.

Between Gairdner River and
Glenelg River: 11/7/1990.

SCOLOPACIDAE

Whimbrel *Numenius phaeopus*
Adele Island: 8/7/1990 (1).

Common Greenshank *Tringa*
nebularia
Adele Island: 8/7/1990 (several).

Grey tailed Tattler *Heteroscelus*
brevipes
Adele Island: 8/7/1990 (several).

Ruddy Turnstone *Arenaria*
interpres
Adele Island: 8/7/1990 (1).

BURHINIDAE

Bush Stone-curlew *Burhinus*
grallarius
Camden Harbour (Government
Camp): 10/7/1990; 12/7/1990
(calling at night).

Beach Stone-Curlew *Esacus*
neglectus
Camden Harbour (shoreline): 9/7/
1990 (1). Mt Lookover (shoreline):
13/7/1990 (1).

HAEMATOPODIDAE

Pied Oystercatcher *Haematopus*
longirostris
Adele Island: 8/7/1990 (3).
Augustus Island (north east
corner): 12/7/1990 (2).

Sooty Oystercatcher *Haematopus*
fuliginosus
Augustus Island (north east
corner): 12/7/1990 (4). Mulgudna
Island: 18/7/1990 (2).

Australian Pratincole *Stiltia Isabella*
Adele Island: 8/7/1990 (1).

LARIDAE

Silver Gull *Larus novaehollandiae*
Adele Island: 8/7/1990 (18). West
Lacepede Island: 19/7/1990 (about
200 in groups of 1–10).

Gull-billed Tern *Sterna nilotica*
West Lacepede Island: 19/7/1990
(several).

Caspian Tern *Sterna caspia*
Adele Island: 8/7/1990 (100+
breeding on west side).
Mulgudna Island: 18/7/1990 (one
nest with 2 eggs heavily
incubated). West Lacepede Island:
19/7/1990 (about 20 pair nesting
in a low area around the lagoon
in centre of the island. Runners
wandering open bare flats.)

Crested Tern *Sterna bergii*
Adele Island: 8/7/1990. Augustus
Island: 12/7/1990 (3). Mulgudna
Island: 18/7/1990 (an earlier
breeding – eggshell identified by
Western Australian Museum).
West Lacepede Island: 19/7/1990
(about 20).

Lesser Crested Tern *Sterna*
bengalensis
Adele Island: 8/7/1990.
Montgomery Reef: 15/7/1990.
Doubtful Bay (Red Cone Creek):
15/7/1990 (1). Mulgudna Island:
18/7/1990 (an earlier breeding –
eggshell identified by Western
Australian Museum).

Roseate Tern *Sterna dougallii*
West Lacepede Island: 19/7/1990
(several thousand chattering
their way up and down the
island – red bills and legs – easily
disturbed).

Little Tern *Sterna albifrons*
West Lacedpede Island: 19/7/1990
(about 200).

Bridled Tern *Sterna anaethetus*
Mulgudna Island: 18/7/1990
(feathers identified by Western
Australian Museum).

Common Noddy *Anous stolidus*
Adele Island: 8/7/1990 (1).

COLUMBIDAE

Emerald Dove *Chalcophaps indica*
Camden Harbour: (Treverton
Sholl recorded on 16/8/1865 a
pigeon – fitting the description
of an Emerald Dove – had been
shot). Storr Island: 17/7/1990 (2).

White-quilled Rock Pigeon
Petrophassa albipennis
Doubtful Bay (Red Cone Creek –
16°05'S 124°41'E): 15/7/1990
(moderately common).

Diamond Dove *Geopelia cuneata*
Doubtful Bay (Red Cone Creek –
16°05'S 124°41'E): 15/7/1990 (5 in
burnt area).

Peaceful Dove *Geopelia striata*
Camden Harbour (Government
Camp): 10/7/1990 (several calling).
Association Camp: 10/7/1990
(several). Gairdner River: 11/7/
1990. Between Gairdner River
and Glenelg River: 11/7/1990.
Augustus Island (Mulam Spring):
11/7/1990. Langgi: 14/7/1990.
Doubtful Bay (mainland opposite
Steep Island): 15/7/1990. Doubtful
Bay (Red Cone Creek – 16°05'S
124°41'E): 15/7/1990.

Bar-shouldered Dove *Geopelia
humeralis*
Camden Harbour (Association

Camp): 9/7/1990; 10/7/1990
(several in mangal). Gairdner
River: 11/7/1990. Between
Gairdner River and Glenelg
River: 11/7/1990. Mt Lookover
(shoreline and slopes): 13/7/1990.
Slate Islands (Wailgwin Island):
14/7/1990 (several). Langgi: 14/7/
1990. Doubtful Bay (mainland
opposite Steep Island): 15/7/1990
(5). Storr Island: 17/7/1990.

Pied Imperial Pigeon *Ducula bicolor*
Camden Harbour: (Treverton
Sholl recorded on 4/7/1865 a
pigeon – fitting the description
of an Pied Imperial Pigeon – had
been shot). Camden Harbour
(Government Camp): 9/7/1990
(one in woodland). Slate Islands
(Wailgwin Island): 14/7/1990
(several). Doubtful Bay (Red
Cone Creek – 16°05'S 124°41'E):
15/7/1990 (1). Storr Island: 17/7/
1990 (7).

PSITTACIDAE

Red-tailed Black Cockatoo
Calyptorhynchus banksii
Camden Harbour (Government
Camp): 10/7/1990 (5 in
woodland). Gairdner River: 11/7/
1990. Between Gairdner River
and Glenelg River: 11/7/1990.
Doubtful Bay (Red Cone Creek –
16°05'S 124°41'E): 16/7/1990 (7).

Little Corella *Cacatua sanguinea*
Gairdner River: 11/7/1990.
Between Gairdner River and
Glenelg River: 11/7/1990.

Sulphur-crested Cockatoo *Cacatua
galerita*
Between Gairdner River and
Glenelg River: 11/7/1990.
Doubtful Bay (Red Cone Creek –

16°05'S 124°41'E): 15/7/1990. Storr Island: 17/7/1990. George Water: 17/7/1990.

Rainbow Lorikeet *Trichoglossus haematodus*
Gairdner River: 11/7/1990.
Between Gairdner River and Glenelg River: 11/7/1990. Langgi: 14/7/1990.

Red-winged Parrot *Aprosmictus erythropterus*
Gairdner River: 11/7/1990.
Between Gairdner River and Glenelg River: 11/7/1990.

CUCULIDAE

Channel-billed Cuckoo *Scythrops novaehollandiae*
Doubtful Bay (Red Cone Creek – 16°05'S 124°41'E): 15/7/1990 (a pair high up on the bare branches of a *Melaleuca leucadendra* tree). An unusual sighting this time of year.

CENTROPODIDAE

Pheasant Coucal *Centropus phasianinus*
Augustus Island (Mulam Spring): 11/7/1990. Slate Islands (Wailgwin Island): 14/7/1990 (1). Doubtful Bay (Red Cone Creek – 16°05'S 124°41'E): 15/7/1990 (2).

STRIGIDAE

Barking Owl *Ninox connivens*
Langgi: 14/7/1990 (1).

Boobook Owl *Ninox novaeseelandiae*

Adele Island: 8/7/1990 (1 perched on communication tower).
Camden Harbour (Association

Camp): 10/7/1990 (1 flushed from tree).

PODARGIDAE

Tawny Frogmouth *Podargus strigoides*
Gairdner River: 11/7/1990 (1).

CAPRIMULGIDAE

Spotted Nightjar *Eurostopodus argus*
Camden Harbour (Association Camp): 9/7/1990 (1).

AEGOTHELIDAE

Australian Owlet-nightjar *Aegotheles cristatus*
Camden Harbour (Government Camp): 9/7/1990 (one flushed from hollow of eucalypt tree); 10/7/1990 (calling during the night).

HALCYONIDAE

Blue-winged Kookaburra *Dacelo leachii*
Camden Harbour (Government Camp): 9/7/1990; 10/7/1990 (calling). Gairdner River: 11/7/1990. Mt Lookover (shoreline and slopes): 13/7/1990. Doubtful Bay (Red Cone Creek – 16°05'S 124°41'E): 15/7/1990. Kingfisher Island: 18/7/1990.
Sacred Kingfisher *Todiramphus sanctus*
Camden Harbour (Government Camp): 10/7/1990 (2). Augustus Island (north east corner): 12/7/1990. Mt Lookover (shoreline and slopes): 13/7/1990.

MEROPIDAE

Rainbow Bee-eater *Merops ornatus*
Camden Harbour (Government

Camp): 9/7/1990; 10/7/1990 (calling). Gairdner River: 11/7/1990. Between Gairdner River and Glenelg River: 11/7/1990. Augustus Island (north east corner): 12/7/1990. Langgi: 14/7/1990. Doubtful Bay (Red Cone Creek – 16°05'S 124°41'E): 15/7/1990.

MALURIDAE

Variegated Fairy-wren *Malurus lamberti*

Doubtful Bay (Red Cone Creek – 16°05'S 124°41'E): 15/7/1990 (2 family groups).

Red-backed Fairy-wren *Malurus melanocephalus*

Camden Harbour (Government Camp): 9/7/1990 (2 family groups, one in eclipse plumage). Gairdner River: 11/7/1990. Between Gairdner River and Glenelg River: 11/7/1990.

PARDALOTIDAE

Striated Pardalote *Pardalotus striatus*

Camden Harbour (Government Camp): 9/7/1990 (calling). Gairdner River: 11/7/1990. Between Gairdner River and Glenelg River: 11/7/1990. Mt Lookover (shoreline and slopes): 13/7/1990.

ACANTHIZIDAE

Weebill *Smicrornis brevirostris*

Camden Harbour (Government Camp): 9/7/1990 (calling). Association Camp: 10/7/1990 (calling). Gairdner River: 11/7/1990. Between Gairdner River

and Glenelg River: 11/7/1990. Mt Lookover (shoreline and slopes): 13/7/1990.

Green-backed Gerygone *Gerygone chloronotus*

Camden Harbour (Government Camp): 10/7/1990 (one in vine thicket). Doubtful Bay (Red Cone Creek 16°05'S 124°41'E): 15/7/1990 (4). Storr Island: 17/7/1990. Kingfisher Island: 18/7/1990.

Mangrove Gerygone *Gerygone levigaster*

Camden Harbour (Government Camp): 9/7/1990; 10/7/1990 (calling from mangal).

MELIPHAGIDAE

Brown Honeyeater *Lichmera indistincta*

Camden Harbour (Government Camp): 10/7/1990 (several in mangal); 11/7/1990 (heard calling). Gairdner River: 11/7/1990. Between Gairdner River and Glenelg River: 11/7/1990. Augustus Island (a ferny creek): 11/7/1990. Augustus Island (north east corner): 12/7/1990. Mt Lookover (shoreline and slopes): 13/7/1990. Langgi: 14/7/1990 (moderately common – breeding: A nest 0.5m up an *Acacia* sp. contained 2 eggs). Doubtful Bay (mainland opposite Steep Island): 15/7/1990. Storr Island: 17/7/1990. Kingfisher Island: 18/7/1990 (common).

Red headed Honeyeater *Mysomela erythrocephala*

Camden Harbour (Government Camp): 9/7/1990; 10/7/1990 (2 in mangal). Augustus Island (north

east corner): 12/7/1990. Mt Lookover (shoreline and slopes): 13/7/1990.

White-lined Honeyeater *Meliphaga albilineata*
Storr Island: 17/7/1990.

Yellow-tinted Honeyeater
Meliphaga flavescens
Langgi: 14/7/1990.

White-gaped Honeyeater
Meliphaga unicolor
Camden Harbour (Government Camp): 9/7/1990; 10/7/1990 (heard calling); 11/7/1990 (several). Gairdner River: 11/7/1990. Between Gairdner River and Glenelg River: 11/7/1990. Augustus Island (a ferny creek): 11/7/1990. Mt Lookover (shoreline and slopes): 13/7/1990. Langgi: 14/7/1990. Storr Island: 17/7/1990.

White-throated Honeyeater
Melithreptus albogularis
Camden Harbour (Government Camp): 9/7/1990 (heard calling); 10/7/1990 (several in woodland); 11/7/1990 (calling). Augustus Island (a ferny creek): 11/7/1990. Mt Lookover (shoreline and slopes): 13/7/1990. Langgi: 14/7/1990. Doubtful Bay (mainland opposite Steep Island): 15/7/1990. Doubtful Bay (Red Cone Creek – 16°05'S 124°41'E): 15/7/1990.

Little Friarbird *Philemon citreogularis*
Camden Harbour (Government Camp): 10/7/1990 (heard calling). Augustus Island (north east corner): 12/7/1990 (1). Mt Lookover (shoreline and slopes): 13/7/1990. Langgi: 14/7/1990 (attracted to flowering *E. miniata*).

Silver-crowned Friarbird *Philemon argenticeps*

Augustus Island (Mulam Spring): 11/7/1990. Langgi: 14/7/1990. Doubtful Bay (Red Cone Creek – 16°05'S 124°41'E): 15/7/1990. Storr Island: 17/7/1990.

Bar-breasted Honeyeater
Ramsayornis fasciatus
Langgi: 14/7/1990 (feeding young). Doubtful Bay (Red Cone Creek – 16°05'S 124°41'E): 15/7/1990 (moderately common, a nest in a *Melaleuca leucadendra* tree suspended 1.5m above the water in a creek).

PETROICIDAE

Jacky Winter *Microeca fascinans*
Between Gairdner River and Glenelg River: 11/7/1990. Mt Lookover: 13/7/1990 (2 in mangroves at base of hill).

Hooded Robin *Petroica cucullata*
Between Gairdner River and Glenelg River: 11/7/1990. Uncommon in the Kimberley.

White-browed Robin *Poecilodryas superciliosa*
Association Camp: 10/7/1990 (a pair in thick vegetation on creek). Gairdner River: 10/7/1990 (1).

PACHYCEPHALIDAE

Mangrove Golden Whistler
Pachycephala melanura
Kingfisher Island: 18/7/1990.

Rufous Whistler *Pachycephala rufiventris*
Camden Harbour (Government Camp): 9/7/1990; 10/7/1990 (3); 11/7/1990 (heard calling). Gairdner

River: 10/7/1990. Between Gairdner River and Glenelg River: 11/7/1990. Augustus Island (north east corner): 12/7/1990. Langgi: 14/7/1990. Doubtful Bay (mainland opposite Steep Island): 15/7/1990 (1). Doubtful Bay (Red Cone Creek – 16°05'S 124°41'E): 15/7/1990 (moderately common). Storr Island: 17/7/1990.

White-breasted Whistler
Pachycephala lanioides
Camden Harbour (Association Camp): 10/7/1990 (2).

Little Shrike-thrush *Colluricincla megarhyncha*
Camden Harbour (Government Camp – patch of vine thicket): 10/7/1990 (2). Augustus Island (Mulam Spring): 11/7/1990. Storr Island: 17/7/1990 (1).

Sandstone Shrike-thrush
Colluricincla woodwardi
Doubtful Bay (mainland opposite Steep Island): 28/4/2005 (1).

Grey Shrike-thrush *Colluricincla harmonica*
Camden Harbour (Government Camp): 10/7/1990 (heard calling + 1 in vine thicket). Mt Lookover (shoreline and slopes): 13/7/1990. Doubtful Bay (Red Cone Creek – 16°05'S 124°41'E): 15/7/1990.

DICRURIDAE

Leaden Flycatcher *Myiagra rubecula*
Camden Harbour (Government Camp): 10/7/1990 (a pair in a patch of vine thicket). Augustus Island (Mulam Spring): 11/7/1990 (2). Between Gairdner River and Glenelg River: 11/7/1990.

Augustus Island (north east corner): 12/7/1990 (2). Mt Lookover (shoreline and slopes): 13/7/1990. Langgi: 14/7/1990. Doubtful Bay (Red Cone Creek – 16°05'S 124°41'E): 16/7/1990 (several). Storr Island: 17/7/1990. Kingfisher Island: 18/7/1990.

Restless Flycatcher *Myiagra inquieta*
Gairdner River: 10/7/1990. Between Gairdner River and Glenelg River: 11/7/1990. Doubtful Bay (Red Cone Creek – 16°05'S 124°41'E): 15/7/1990.

Shining Flycatcher *Myiagra alecto*
Camden Harbour (Government Camp): 9/7/1990 (1); 10/7/1990 (one in *Sonneratia alba* mangroves).

Mangrove Grey Fantail *Rhipidura phasiana*
Camden Harbour (Government Camp): 10/7/1990 (2).

Willie Wagtail *Rhipidura leucophrys*
Camden Harbour (Government Camp): 9/7/1990; 10/7/1990 (1). Gairdner River: 10/7/1990. Between Gairdner River and Glenelg River: 11/7/1990. Langgi: 14/7/1990. Doubtful Bay (Red Cone Creek – 16°05'S 124°41'E): 15/7/1990. Mulgudna Island: 18/7/1990 (2).

Northern Fantail *Rhipidura rufiventris*
Camden Harbour (Government Camp): 9/7/1990 (heard calling); 10/7/1990 (4); 11/7/1990 (heard calling). Between Gairdner River and Glenelg River: 11/7/1990. Augustus Island (north east corner): 12/7/1990. Mt Lookover (shoreline and slopes): 13/7/1990.

Langgi: 14/7/1990. Doubtful Bay (Red Cone Creek – 16°05'S 124°41'E): 15/7/1990. Storr Island: 17/7/1990.

Magpie Lark *Grallina cyanoleuca*
Gairdner River: 11/7/1990. Between Gairdner River and Glenelg River: 11/7/1990.

Spangled Drongo *Dicrurus bracteatus*
Camden Harbour (Government Camp): 10/7/1990 (one in *Sonneratia alba* mangroves). Augustus Island (Mulam Spring): 11/7/1990.

CAMPEPHAGIDAE

Black-faced Cuckoo-shrike
Coracina novaehollandiae
Camden Harbour (Government Camp): 10/7/1990 (2). Gairdner River: 10/7/1990. Between Gairdner River and Glenelg River: 11/7/1990. Augustus Island (north east corner): 12/7/1990. Slate Islands (Wailgwin Island): 14/7/1990 (1). Langgi: 14/7/1990 (moderately common). Doubtful Bay (mainland opposite Steep Island): 15/7/1990 (10 in a clump of fig trees). Doubtful Bay (Red Cone Creek – 16°05'S 124°41'E): 15/7/1990. Storr Island: 17/7/1990.

White-breasted Cuckoo-shrike
Coracina papuensis
Camden Harbour (Government Camp): 9/7/1990 (3); 10/7/1990 (1); 11/7/1990 (1). Gairdner River: 10/7/1990. Between Gairdner River and Glenelg River: 11/7/1990. Augustus Island (a ferny creek): 11/7/1990. Mt Lookover (shoreline and slopes): 13/7/1990 (1). Storr Island: 17/7/1990.

White-winged Triller *Lalage tricolor*

Gairdner River: 10/7/1990. Between Gairdner River and Glenelg River: 11/7/1990. Doubtful Bay (Red Cone Creek – 16°05'S 124°41'E): 15/7/1990 (10 flying in a westerly direction).

Varied Triller *Lalage leucomela*
Augustus Island (Mulam Spring): 11/7/1990. Augustus Island (north east corner): 12/7/1990 (1). Doubtful Bay (Red Cone Creek – 16°05'S 124°41'E): 15/7/1990 (heard calling). Storr Island: 17/7/1990.

ORIOLIDAE

Yellow Oriole *Oriolus flavocinctus*
Storr Island: 17/7/1990.

Olive-backed Oriole *Oriolus sagittatus*
Augustus Island (a ferny creek): 11/7/1990. Doubtful Bay (Red Cone Creek – 16°05'S 124°41'E): 15/7/1990.

ARTAMIDAE

White-breasted Woodswallow
Artamus leucorhynchus
Camden Harbour (Government Camp): 9/7/1990 (about 50 flying over). Augustus Island (north east corner): 12/7/1990 (small flock flying over). Doubtful Bay (Red Cone Creek – 16°05'S 124°41'E): 15/7/1990. Storr Island: 17/7/1990. George Water: 17/7/1990 (many heard calling from high above).

Masked Woodswallow *Artamus personatus*
Gairdner River: 11/7/1990. Highly nomadic. Uncommon in this area.

Little Woodswallow *Artamus minor*
Camden Harbour (Government Camp): 9/7/1990 (1). Between Gairdner River and Glenelg River: 11/7/1990. Mt Lookover (shoreline and slopes): 13/7/1990 (4). Doubtful Bay (mainland opposite Steep Island): 15/7/1990 (1). Doubtful Bay (Red Cone Creek – 16°05'S 124°41'E): 15/7/1990.

CRACTICIDAE

Grey Butcherbird *Cracticus torquatus*
Langgi: 14/7/1990.

Pied Butcherbird *Cracticus nigrogularis*
Camden Harbour (Government Camp): 9/7/1990; 10/7/1990 (heard calling); 11/7/1990 (heard calling). Gairdner River: 11/7/1990. Between Gairdner River and Glenelg River: 11/7/1990. Doubtful Bay (Red Cone Creek – 16°05'S 124°41'E): 15/7/1990. Kingfisher Island: 18/7/1990.

CORVIDAE

Torresian Crow *Corvus orru*
Gairdner River: 11/7/1990. Between Gairdner River and Glenelg River: 11/7/1990.

Little Crow *Corvus benneti*
Camden Harbour (Government Camp): 10/7/1990 (2); 11/7/1990 (1).

PTILONORHYNCHIDAE

Great Bowerbird *Ptilonorhynchus nuchalis*
Camden Harbour (Government Camp): 9/7/1990; 10/7/1990 (heard calling from a patch of

vine thicket). Augustus Island (Mulam Spring): 11/7/1990. Langgi: 14/7/1990. Doubtful Bay (Red Cone Creek – 16°05'S 124°41'E): 15/7/1990. Storr Island: 17/7/1990.

PASSERIDAE

Zebra Finch *Taeniopygia guttata*
Gairdner River: 11/7/1990.

Double-barred Finch *Taeniopygia bichenovii*

Camden Harbour (Association Camp): 10/7/1990 (several at a small freshwater pool). Gairdner River: 11/7/1990. Between Gairdner River and Glenelg River: 11/7/1990. Augustus Island (Mulam Spring): 11/7/1990. Langgi: 14/7/1990. Doubtful Bay (Red Cone Creek – 16°05'S 124°41'E): 15/7/1990.

Long-tailed Finch *Poephila acuticauda*

Camden Harbour (Association Camp): 10/7/1990 (several). Gairdner River: 11/7/1990.

Crimson Finch *Neochmia phaeton*
Gairdner River: 11/7/1990. Between Gairdner River and Glenelg River: 11/7/1990.

Gouldian Finch *Erythrura gouldiae*
Camden Harbour (Association Camp): 13/8/1865 (A description of captured birds caught with bird lime and recorded by Treverton Sholl was as follows – about the size of a canary, the head a bright red, neck and breast beautiful purple, belly bright yellow, under part of tail true blue, back green and beak light red). This is the first record of a

Gouldian Finch in Western Australia.

17/7/1990. Kingfisher Island: 18/7/1990.

DICAEIDAE

Mistletoebird *Dicaeum hirundinaceum*

Camden Harbour (Government Camp): 9/7/1990 (1). Augustus Island (Mulam Spring): 11/7/1990. Augustus Island (north east corner): 12/7/1990. Langgi: 14/7/1990. Doubtful Bay (mainland opposite Steep Isalnd): 15/7/1990. Doubtful Bay (Red Cone Creek – 16°05'S 124°41'E): 15/7/1990 (2). Storr Island: 17/7/1990.

HIRUNDINIDAE

Tree Martin *Hirundo nigricans*
Camden Harbour (Government Camp): 9/7/1990 (6). Gairdner River: 11/7/1990. Between Gairdner River and Glenelg River: 11/7/1990. Doubtful Bay (mainland opposite Steep Isalnd): 15/7/1990 (5). Doubtful Bay (Red Cone Creek – 16°05'S 124°41'E): 15/7/1990 (10).

ZOSTEROPIDAE

Yellow White-eye *Zosterops luteus*
Camden Harbour (Government Camp): 10/7/1990; 11/7/1990 (heard calling in mangal). Gairdner River: 11/7/1990. Between Gairdner River and Glenelg River: 11/7/1990. Augustus Island (Mulam Spring): 11/7/1990. Augustus Island (north east corner): 12/7/1990 (6). Mt Lookover (shoreline and slopes): 13/7/1990 (heard calling in mangroves). Doubtful Bay (Red Cone Creek – 16°05'S 124°41'E): 15/7/1990. Storr Island:

SYLVIIDAE

Tawny Grassbird *Megalurus timoriensis*

Adele Island: 8/7/1990 (2). Augustus Island (Mulam Spring): 11/7/1990 (in tall grass adjacent to gully).

Golden-headed Cisticola *Cisticola exilis*

Slate Islands (Wailgwin Island): 14/7/1990 (1).

DISCUSSION

A total of 128 bird species 72 non-passerines and 56 passerines were recorded over the 12-day expedition. Red-footed Booby and Great Frigatebird were confirmed breeding for the second time in Western Australia on Adele Island. Of interest near Camden Harbour were White-browed Robin and one Hooded Robin. Two out of season Channel-billed Cuckoo were found at a creek near Doubtful Sound.

REFERENCES

COATE, K.H., SMITH, L.A. and FONTANINI, L. 1994. The birds of Adele Island, Western Australia including notes on recently established breeding colonies of Red-footed Boobies (*Sula sula*) and Great Frigatebirds (*Fregata minor*). *Western Australian Naturalist*, Vol 19: 285–291.

COATE, K. 1995. First love on a seabird island: breeding records

- for Adele Island, Western Australia. *Wingspan* 5(3): 24–25.
- COATE, K. 1997. Adele Island, Western Australia. *Corella*, Vol 21: 124–128.
- JOHNSTONE, R.E. 2001. Checklist of the birds of Western Australia. *Records of the Western Australian Museum*, Supplement No. 63.
- JOHNSTONE, R.E. and STORR, G.M. 1998. *Handbook of Western Australian Birds. 1 Non Passerines*. Western Australian Museum, Perth.
- JOHNSTONE, R.E. and STORR, G.M. 2004. *Handbook of Western Australian Birds. 2 Passerines*, Western Australian Museum.
- SHOLL, T.C. 1865 Diary. Western Australian Archives – Battye Library, Perth, W.A.
- STORR, G.M. 1980. *Birds of the Kimberley Division, Western Australia*. Western Australian Museum Special Publication Number 11.
- SERVENTY, D.L. and WHITTELL, H.M. 1976. *Birds of Western Australia*. Fifth Edition. University of Western Australia Press.



1: The 1990 Expedition Camp at Andandilia in Camden Harbour. Photo: Kevin Kenneally.



2: Great Frigatebird with young nesting upon *Abutilon indicum* on Adele Island – July 1990. Photo: Kevin Coate.



3: Brown Booby on Adele Island. Photo: Kevin Coate.



4: Masked Boobies nesting on beach with eggs and young on Adele Island. A Brown Booby with a large downy chick is in the background. Photo: Kevin Coate.



5: Coming ashore at the abandoned 1865 Government Camp at Andandilia in Camden Harbour. Sheep Island can be seen in the background. Photo: Kevin Coate.

6: Peter Knight checks with the Royal Flying Doctor Base at Derby for radio reception. Photo: Kevin Kenneally.

7: Ian Elliot alongside 'Martin's Boab Tree' at the proposed townsite of Elliot. Photo: Kevin Coate.

8: Almost fledged Great Frigatebird chick on Adele Island. Photo: Kevin Coate.



9: Ruins of a small building abandoned in 1865 alongside Momorinyam Creek at Association Camp.

10: Kevin Coate, Neville Morlumbun and Donald Langi alongside the granite headstone over John Meadon's grave in the Momorinyam Creek area.

11: A *Hibiscus* sp. common along creek line and sandstones at Langgi.

12: Participants on the 1990 Camden Harbour Expedition: Standing from left to right, Greg Harold, Michael Knight, Peter Knight, Kevin Kenneally, Allan Smith, Ian Elliot, Jimmy Alison, Lee Fontanini, Donald Langi, Neville Morlumbun. Sitting from left to right, Kevin Coate, Berkeley Allen, Loisette Marsh, Daphne Edinger, Laurie Smith, Desmond O'Dwyer, Lorraine Brindle, Angela Sanders. All photos: Kevin Coate.





13

13: Dead and bleached *Sonneratia alba* mangroves along the shoreline at the base of Mt Lookover at Camden Harbour.

14: Loisette Marsh examines a sea urchin in Rogers Strait.

15: Collecting specimens on Montgomery Reef.

16: Neville Morlumbun on Mt Lookover with Imorogu Tabletop in the background. All photos: Kevin Coate.



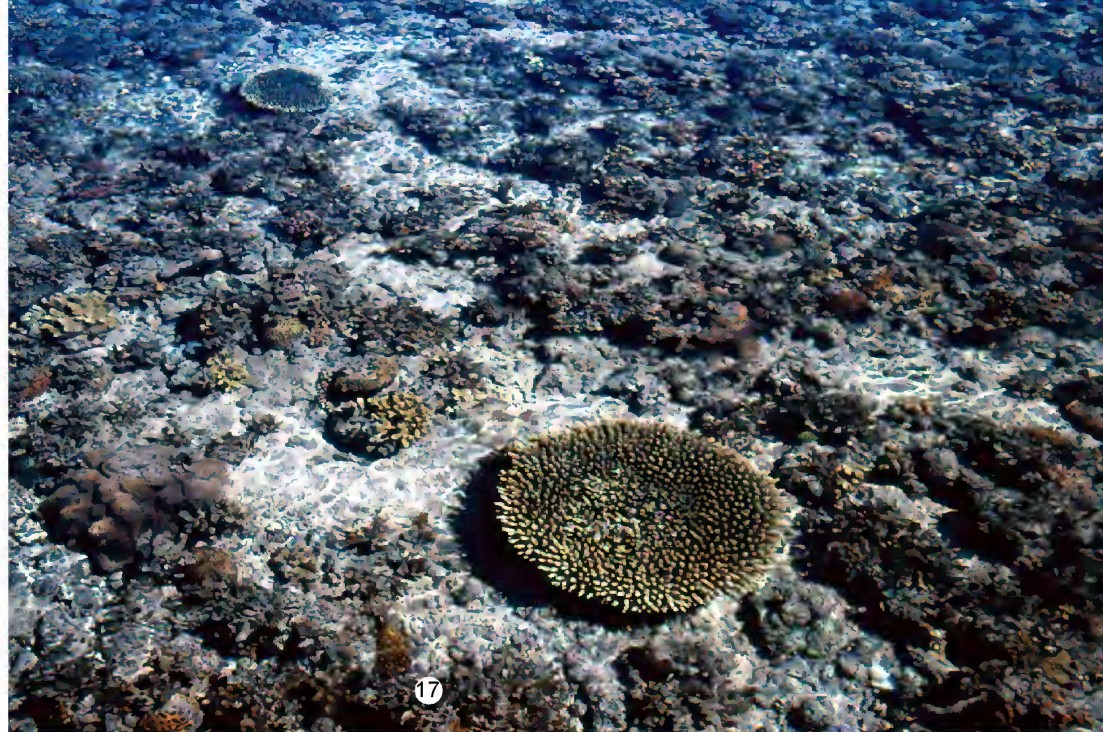
14



15



16



20: A mixture of corals on Montgomery Reef. Photo: Kevin Coate.

18: Our crew, Shaz, Hoffie and Chris with three Barramundi. Photo: Kevin Kenneally.

19: Loisette Marsh cataloging corals in Roger Strait. Photo: Kevin Coate.

20: Six dingo pups found in a hole in the bank of Bundolgwa Creek. Photo: Kevin Coate.



21

21: Sandstone formations on Wailgwin Island, the larger of the Slate Islands in Camden Sound.



22

22: Donald Langi and the abandoned plough from the Kunmunya Presbyterian Mission.

23: Mertens' Water Monitor *Varanus mertensi* one of several reptiles found along the creek back from the beach at Langgi.

24: Eroded sandstone formations at Langgi – an Aboriginal mythological site.

All photos: Kevin Coate.



23



24

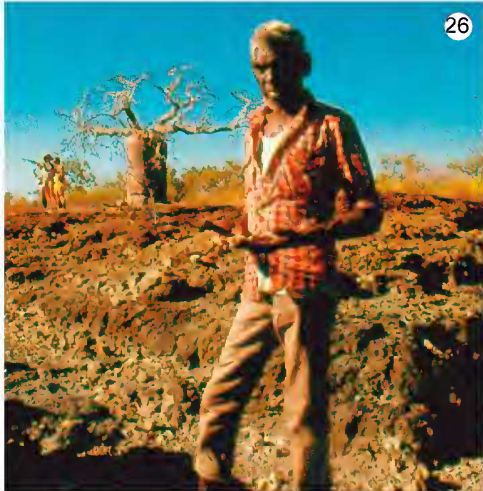
25: Langgi – *Ondinea purpurea*. A water lily confined to sandstone streams of the Kimberley.

26: Donald Langi holding a collection of apricot coloured quartz at Association Inlet.

27: The backpackers setting off over jumbled basalt rocks from Government Camp – Andandilia.

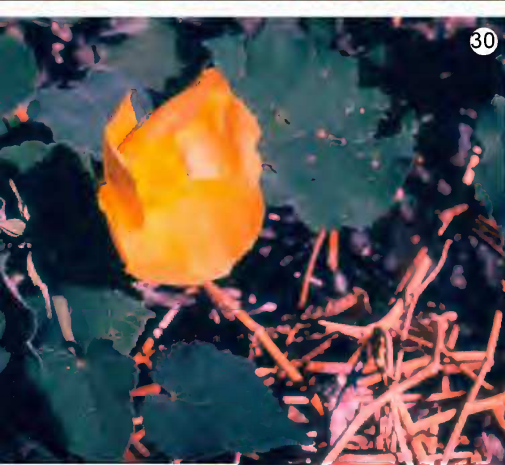
28: Kevin Coate looking over Success Strait to Doubtful Bay from Storr Island.

All photos: Kevin Coate.





29



30



31



32

29: Bluestone ballast from the wreck of the *Calliance* at low tide on Calliance Point.

30: *Abutilon indicum* shrub on which Red-footed Booby and Great Frigatebird nest on Adele Island.

31: Donald Langi at Ngumbri – an Aboriginal art site in Doubtful Bay.

32: *Eucalyptus kenneallyi*, a new species found on Storr Island.

All photos: Kevin Coate.



33: *Sonneratia alba*, one of the dominant species of mangroves in Camden harbour.

34: *Aidia racemosa* back from the beach leading up to Ngumbri opposite Steep Island in Doubtful Bay.

35: Angela Sanders relaxes in front of a campfire at Langgi. For the first time there were no flies and no donkeys.

36: Overlooking Camden Harbour and Sheep Island from the 1865 Government Camp at Andandilia. All photos: Kevin Coate.

